



India's largest manufacturer of digital inkjet printers

# VERVE

## TRUE FLATBED UV PRINTER

- Prints on any rigid surface
- True flatbed for smaller foot print
- Stationary bed for precise dot placement
- White ink printing option for printing on clear & dark surface materials
- Maximum applications & business opportunities





## **COLORJET: India's largest manufacturer of digital inkjet printers**

Whatever you can imagine, ColorJet has the gear to transform your imagination into reality. Since inception in 2004, the ColorJet Group has been powered by over 1500 senior man-years of intensive digital print technology experience. As the leaders in Inkjet technology we offer state-of-the-art large-format printing solutions designed with exceptional speed, flexibility and quality.

The reliability and performance of ColorJet Group, the largest manufacturer of digital inkjet printers can be seen and experienced in 14 countries worldwide. With innovative technology to print on an extraordinary range of textiles and substrates, ColorJet enables textile designers, brand managers, retailers, visual merchandisers and architects to be as creative, vibrant and original as they want to be.

The company maintains its operations via two manufacturing facilities and sales offices spread across seven countries, which include India, China, Bangladesh, UAE and Sri Lanka. To date, ColorJet has installed and implemented over 4,000 of its printing solutions and products across 315 cities around the world backed by a strong 278 member team, of which almost 100 are in technical related functions. Any wonder then that apart from leading professionals, the Government of India too has recognized the technological innovation strength of ColorJet's R&D department.

With dependable, high quality and robust output, ColorJet users deliver time and again. Our capabilities ensure maximum business and growth for all associated with us.



# VERVE TRUE FLATBED UV PRINTER : MAX APPLICATIONS, MAX BUSINESS

VERVE is an Advanced True Flatbed UV Printer capable of printing on any rigid surface. True flatbed ensures better print registration for higher quality prints on irregular shapes and uneven surface materials.

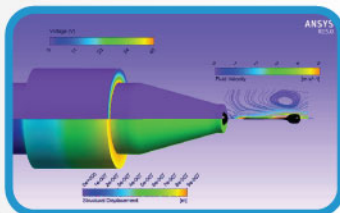
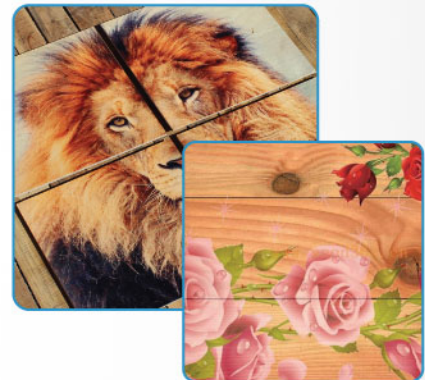
VERVE is designed with a comparatively very small footprint and needs less installation & operation area.

White ink option enables printing on clear & dark surface materials : opens up tremendous applications and business opportunities.

## VERVE FEATURES TO BOOST YOUR BUSINESS

### INNUMERABLE APPLICATIONS, EXPANDED BUSINESS POSSIBILITIES

Colorjet Verve expands business horizons by opening up a world of specialised applications that can command premium prices. Colorjet Verve can print on almost any kind of surface, unlike conventional rigid capable printers that use friction or belt feed systems. This even includes irregular shaped or non-square items, heavy substrates and materials that have an uneven surface, such as wood. Colorjet Verve is also the perfect printing solution for complex technical or industrial printing applications where accurate, repeatable print geometry is critical.



### SPECIALLY DEVELOPED AIVC TECHNOLOGY

- Proprietary AIVC technology for consistent print performance by maintaining constant Jetting conditions even in varying environmental conditions

### TRUE FLATBED - PRECISELY ENGINEERED ON 3D CNC MACHINE

- Small installation and operation footprint
- Easy media loading and printing
- Can print on odd-shaped media with uneven surfaces.
- Stationary media
  - ensures precise drop placement
  - accuracy in registration
  - superior print quality

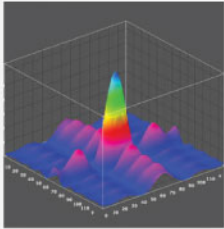
### AUTOMATIC MEDIA THICKNESS SENSOR

- Supports media thickness of upto 100 mm
- Media Sensor automatically measures thickness of media and sets head-height accordingly
  - less time needed to load media and improved productivity
  - maintains uniform print quality
  - easy media loading
  - minimised human error and wastage

## ANTI-CRASH SENSOR

- Eliminates head strike situations caused by :
  - media deformation due to heat
  - curled edge
  - human error while sensing media thickness
  - vacuum failure

## RIP



- Equipped with advance color management engine and color processing tools
- Faster processing of files saves time, increases productivity
- User-friendly, easy to use color controls to handle colors
- Advanced dither patterns for photo-realistic output
- Fully customized printer settings for enhanced print results
- Smoother gradations, vibrant colors for superior print quality
- Inbuilt ICC profiles for various media and print modes

## INDUSTRIAL GRADE JETTING ASSEMBLY

- Consistent print quality through the life of printhead
- Longer life span ensures better durability of print head
- Low maintenance, easy to handle, lower wastage

## WHITE INK PRINTING OPTION

- System designed to use white ink as additional color
- Ink circulation feature maintains correct density, constant inflow and reduces head damage
- Can print on clear and dark substrates
- Enables unlimited applications, for unlimited business opportunities
- Can be used as underlay, overlay, spot or within image

## UV LAMPS WITH ADJUSTABLE POWER CONTROL

- Adjustable UV lamp power ensures :
  - increased UV Lamp life
  - better adhesion on difficult media
  - prevents damage of heat sensitive media due to excess heat

## USER DEFINED VACUUM SYSTEM

- Accommodates various sizes of substrates
- Entire table divided into four vacuum zones
- Smaller size media can be mounted
- Ensures media flatness for sharper prints

## UV LAMPS WITH AUTOMATIC ELECTRONIC SHUTTERS AND REFLECTORS

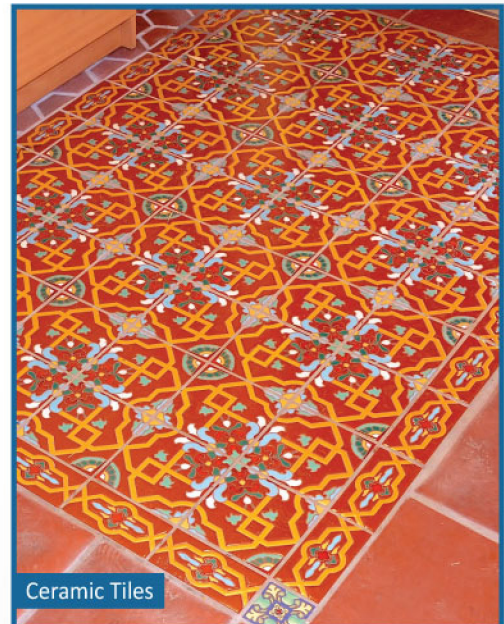
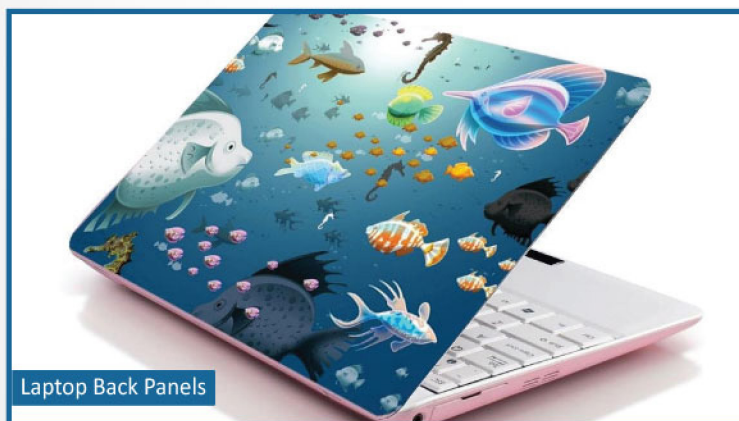
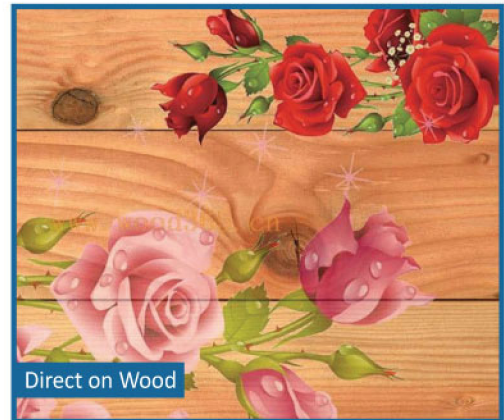
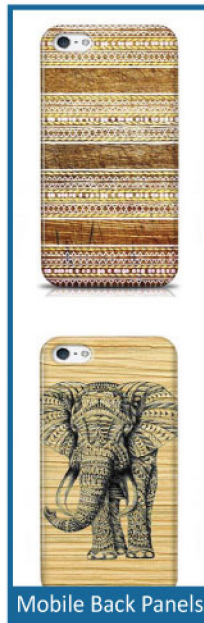
- Prevents excess heating of automatic electronic shutters
- Produces gloss / matt print finishes
- Minimizes banding during curing while printing
- Noiseless mechanism because of electronics shutters

## INK

- Wider color gamut of inks for vibrant color
- High density colors for higher coverage per liter
- Optimised for best performance and longevity of print heads
- Better scratch resistance



# APPLICATIONS FOR MAXIMUM PROFITABILITY



All trademarks, logos, symbols and designs mentioned here are trade names, trademarks and copyrights of their respective brand owners.

# SPECIFICATIONS

VERVE UV							
Models			VU - 4012	VU - 4112	VU - 4024	VU - 4124	VU - 4124i
Print Size			2.5m x 1.65m				
Loadable media size			2.5m x 1.65m				
Print Technology			Drop-on-demand, piezo electric inkjet				
Print Head Type			Industrial Grade Jetting assemblies				
No. of Print Heads			4	5	4	5	5
Resolution			Up to 1440 DPI				
Media Handling			Vacuum enabled True Flat Bed				
Media Thickness			Up to 100mm				
Ink Types			UV-curable pigment ink				
Print Colors			CMYK	CMYK & W	CMYK	CMYK & W	CMYK & W
Ink System			Bulk ink refillable system				
Curing system			UV lamps with automatic shutters				
RIP Software			Caldera (Colorjet Edition)				
File Format			TIFF, JPEG, EPS, PDF, Postscript3				
Interface			High Speed USB port				
Print Modes		DPI	Passes	Print Speed (In Sq. Meter/Hrs)			
Mode 1	(720x 720)	4	15	15	25	25	38
Mode 2	(720x 1080)	6	12	12	18	18	29
Mode 3	(720x 1440)	8	8	8	14.5	14.5	22
Operating Voltage			Single Phase AC 220V, 40 Amp, 50/60Hz,				
Environmental		Power ON	Temperature 18 to 28° C, Humidity 20 to 60%RH (Non-condensing)				
		Power OFF	Temperature 5 to 40° C, Humidity 20 to 80%RH (Non-condensing)				
Dimension Printer only			4540 mm x 2470 mm x 1340 mm (LxWxH)				
Dimension with Packing			4730 mm x 2280 mm x 1830 mm (LxWxH)				
Weight			Gross: 2070 Kgs; Net : 1870 Kg				

Accessories shown are not part of standard equipment. Color may vary from actual body color due to printing on paper.  
Company reserves the right to change above specifications without notice

## COLORJET GROUP

**INDIA** : B-195, Phase-II, Noida-201305 (U.P.), INDIA. **T** +91 120 4548195

**DUBAI** : Block - A, Office No. 115, Hamsah Building, Karama, P.O. Box : 123360, Dubai - UAE. **T** 00971 43961744

**E** sales@colorjetgroup.com | **W** www.colorjetgroup.com